

INSTRUMENT APPROACH CHART - ICAO

SUMBURGH  
ILS/DME/  
VOR or NDB(L)  
RWY 27  
(ACFT CAT A,B,C)

MSA

25NM

24

180

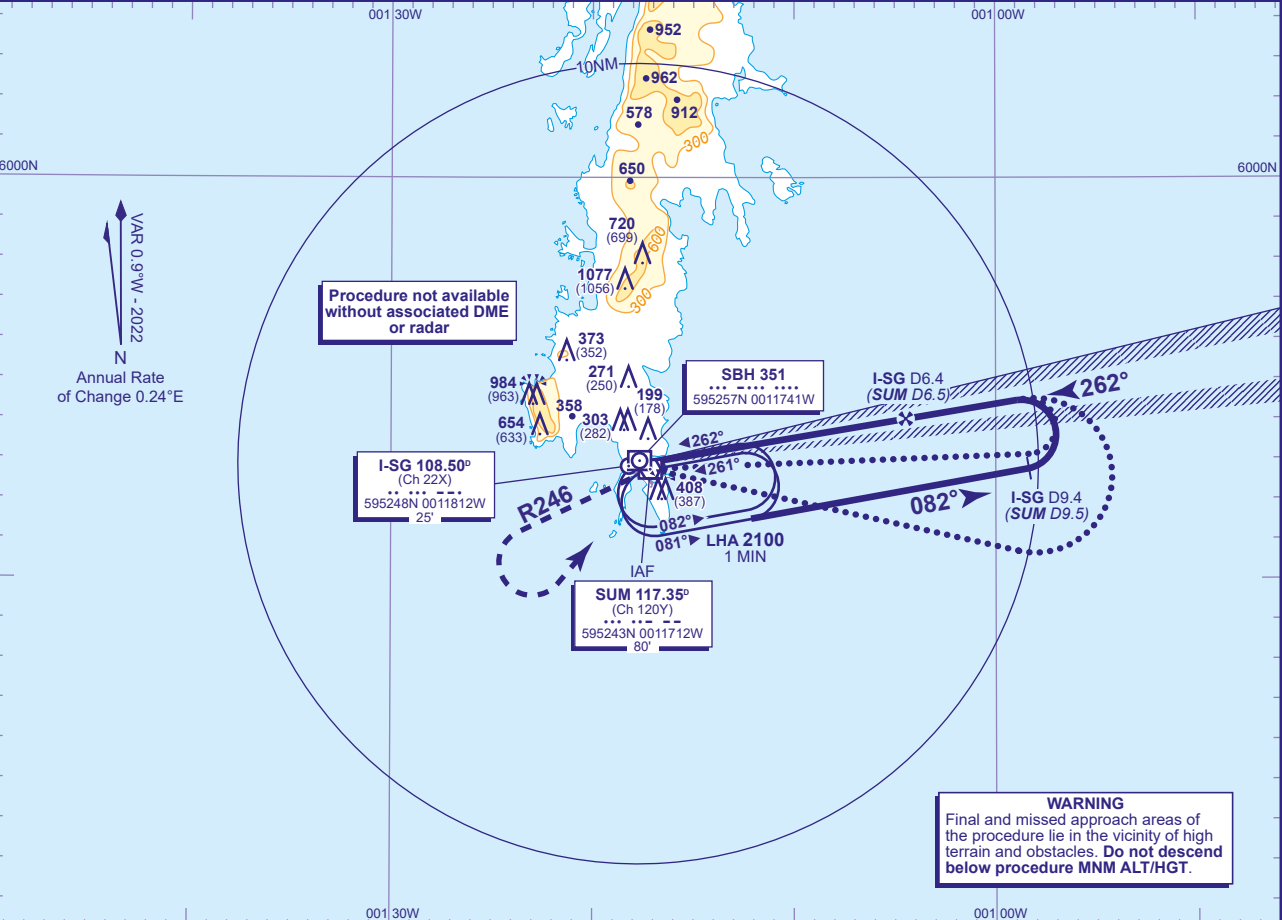
090

21

VOR SUM or NDB(L) SBH

TWR	118.255	SUMBURGH TOWER	AD ELEVATION	21
RAD	131.300, 123.155	SUMBURGH RADAR	THR ELEVATION	21
ATIS	125.855	SUMBURGH INFORMATION	OBSTACLE ELEVATION	1077 AMSL (1056) (ABOVE THR)
AFIS	118.255	SUMBURGH INFORMATION	BEARINGS ARE MAGNETIC	

TRANSITION ALTITUDE  
6000

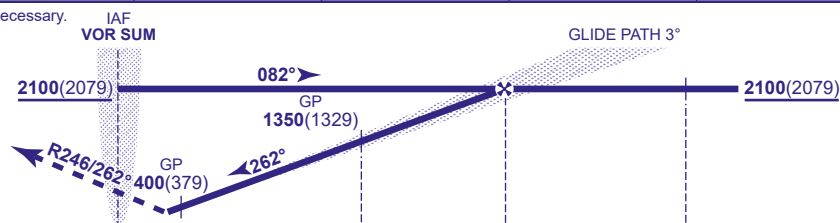


RECOMMENDED PROFILE GLIDE PATH 3°, 318FT/NM

I-SG DME	6	5	4	3	2	1
ALT(HGT)	1990(1969)	1670(1649)	1350(1329)	1030(1009)	710(689)	400(379)

RDH 56 Arrival not below MSA. Shuttle in hold as necessary.

Continuous climb to 3000. Initially straight ahead to until abeam VOR SUM then turn left to establish on SUM VOR R246 (NDB(L) SBH QDM 245°). On reaching 1500 turn left to VOR SUM or NDB(L) SBH climbing to 3000 or as directed.



I-SG DME zero ranged to THR RWY 27

Aircraft Category	A	B	C	Rate of descent	G/S KT	160	140	120	100	80
OCA (OCH)	CAT I	267(246)	267(246)	267(246)	FT/MIN	850	740	640	530	420
VM(C)OCA (OCH AAL)	Total Area	800(779)	1200(1179)	1400(1379)						
	Restricted (See Note 3)	800(779)	800(779)	1130(1109)						

**ALTERNATIVE PROCEDURES**  
From NDB(L) SBH hold: As for main procedure except fly outbound on extended outbound leg of the NDB(L) SBH hold.  
From overhead VOR SUM or NDB(L) SBH: From the overhead not below 2100(2079) fly outbound on SUM VOR R089/NDB(L) SBH QDR 091 ° (CAT A,B), SUM VOR R104/NDB(L) SBH QDR 105° (CAT C) not below 2100(2079). At I-SG DME 9.4 (SUM DME 9.5) base turn left to establish on the LOC. Once established continue as for main procedure.

**AIRCRAFT UNABLE TO RECEIVE DME I-SG**  
Advise ATC. Equivalent radar ranges will be provided at 9.4NM outbound and inbound at 7NM approaching the FAP and at 4NM.

**NOTE 1** LOC is offset 2.6° north of the extended RWY C/L and intercepts the RWY C/L 0.4NM from the THR.  
**2** Due to the relative position of VOR/DME and the THR of RWY 27, DME SUM does not provide reliable ranges to the THR.  
**3** Reduced VM(C) minima applies to aircraft which manoeuvre outside the quadrant north of RWY 09/27 C/L and west of RWY 15/33 C/L.

CHANGE (13/23): VOR/DME SUM RECALIBRATED. RADIALS.